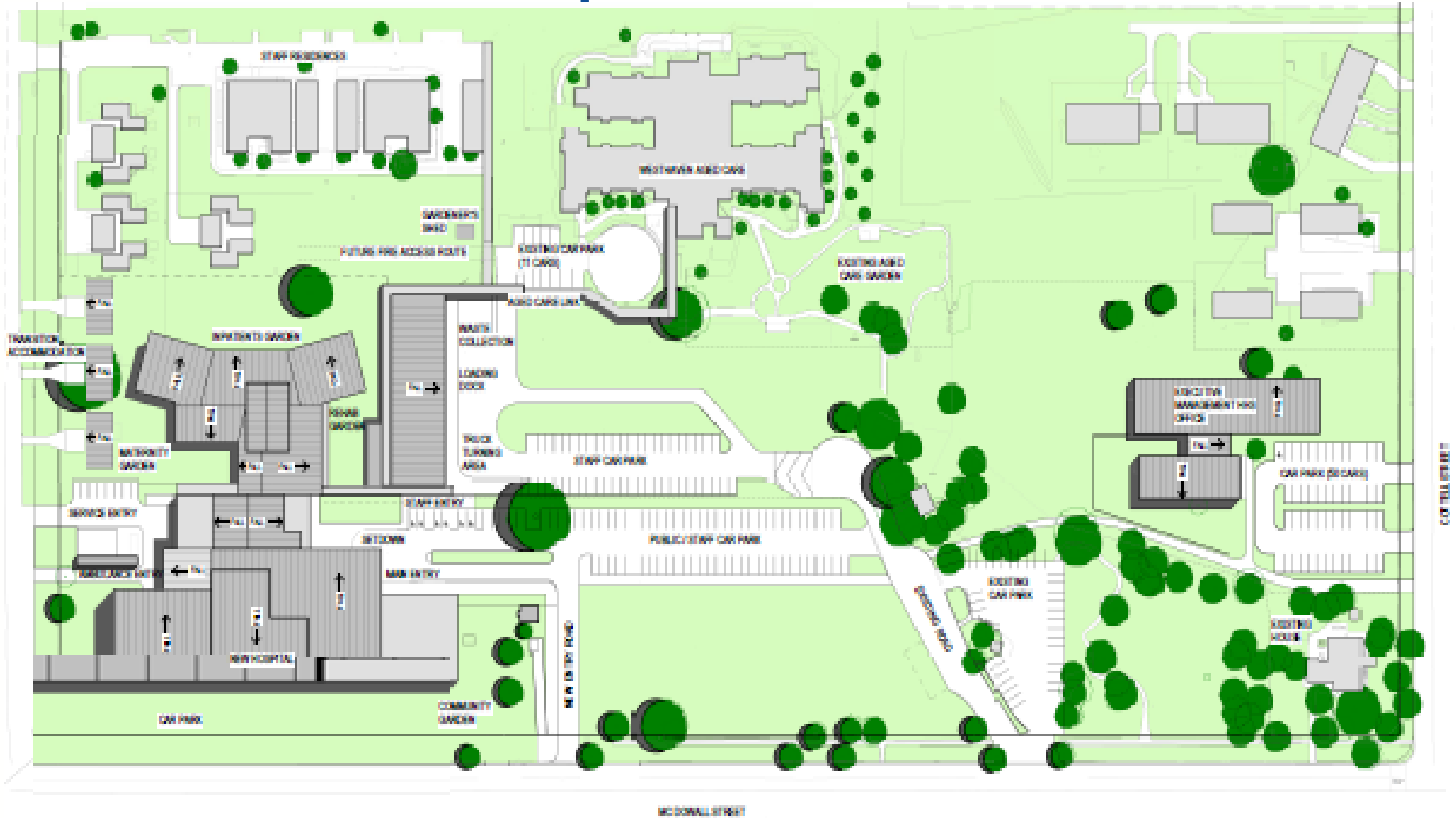


Roma Hospital Construction Opportunities

Supply Chain Session

Proposed Site



CONTELL STREET

3D Model



Roma Procurement Packages

- Consultants
- Early works:
 - pathology relocation
 - demolition
- Main building works
- HHS offices and car parks
- Transition accommodation
- Demolition of existing hospital

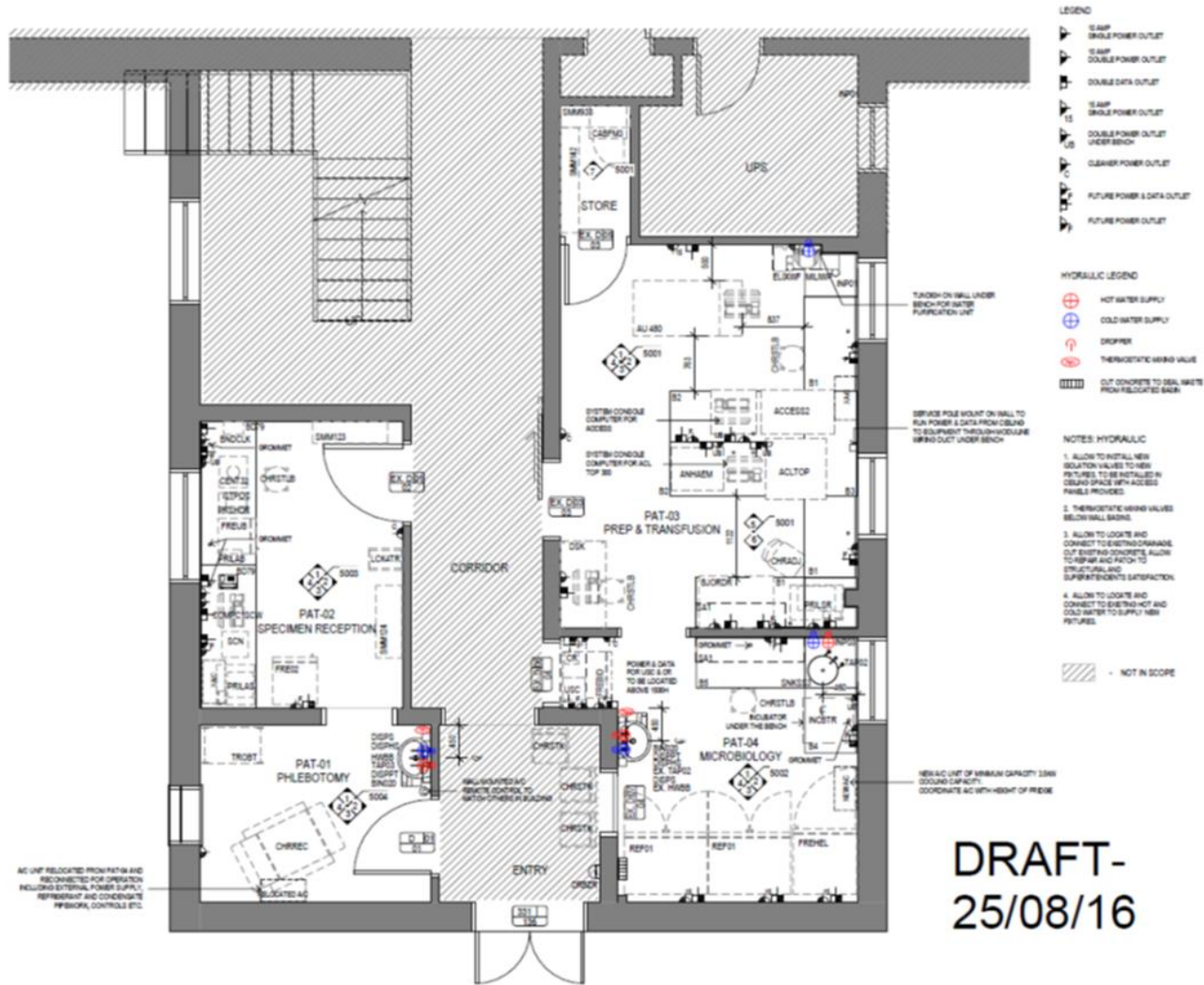
Consultants

- Principal Consultant – tenders closed
- Project Manager – tender closes next week

Early Works Pathology

- Relocate existing pathology unit to area in existing hospital
- Approx. \$200,000
- Forecast tender release September 2016
- Contractors to submit Capability Statement to Commerce Roma

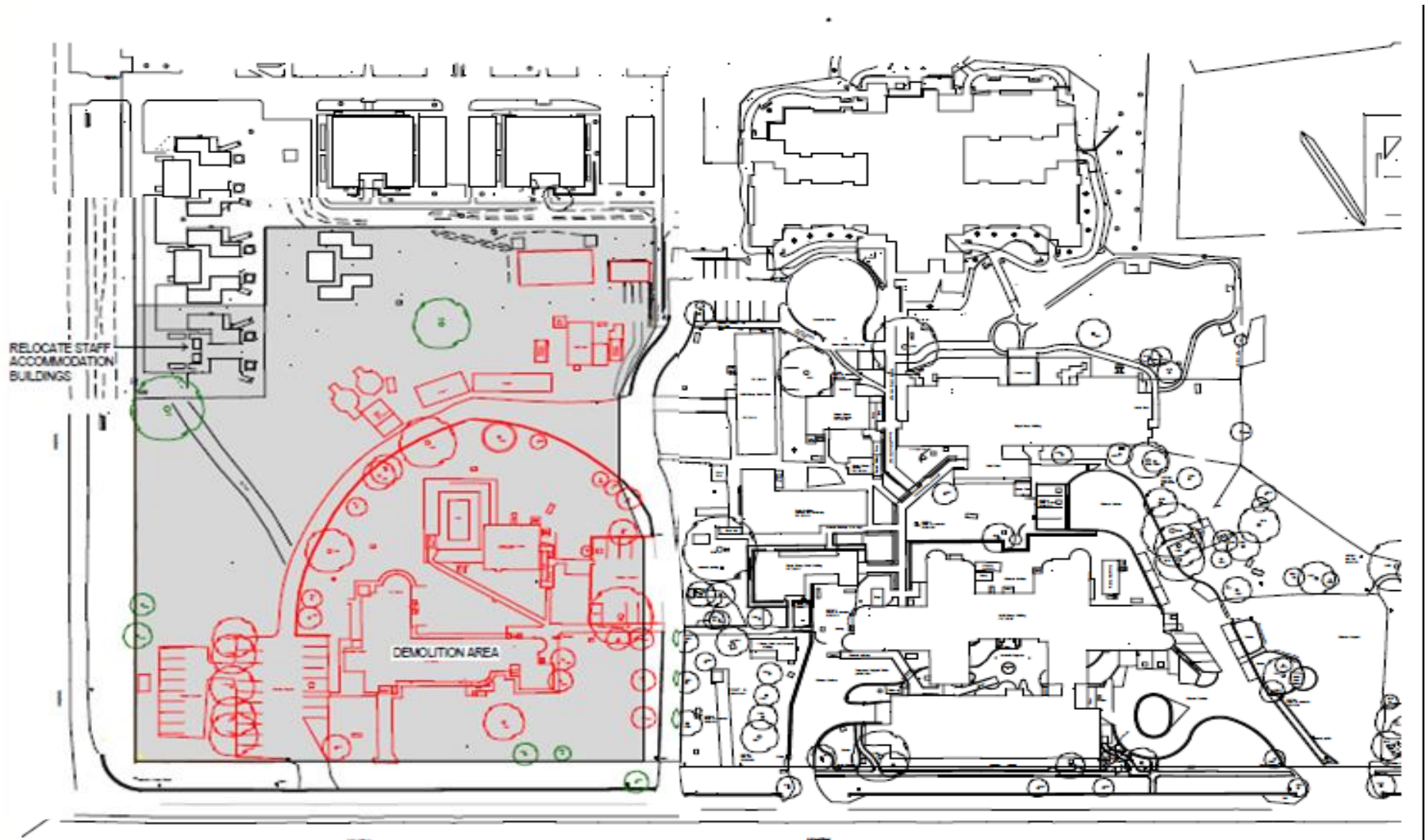
Early Works Pathology



Early Works Demolition

- Demolition of old nurses' quarters and pathology unit
- Asbestos
- Approx. \$2,000,000
- Forecast tender release October 2016

Early Works Demolition



Main Building Works

- Main building works
- Approximately \$50,000,000
- Forecast tender mid 2017

Government Policy

- Queensland Procurement Policy
- Capital Works Management Framework
- Queensland Charter for Local Content
- Queensland Government support maximising local opportunities

Contractors / Subcontractors / Suppliers

- Building Contractors – over \$500,000 to be registered through the PQC system and Q Tender
- Subcontractor/Suppliers – the successful Building Contractor will be required to demonstrate:
 - their support for local industry; and
 - their engagement with local Subcontractors and Suppliers.

What should you do?

How can I be involved?

- Pathology – Capability Statement to Commerce Roma
- Demolition – register through PQC
- Register on ICN <http://gateway.icn.org.au/>
- Make self known to Commerce Roma